

Offers In The Region Of
£375,000
Juniper Gardens, Southsea PO5 2FN



HIGHLIGHTS



We are thrilled to present this stunning **GROUND FLOOR**, two bedroom apartment, featuring high ceilings and an abundance of natural light, in the heart of Central Southsea, complete with secure, gated parking. Thoughtfully restored, the property was once part of the historic St John's College, seamlessly blending period charm with modern luxury. Located within the exclusive St John's Square development, SageHouse is nestled alongside beautifully landscaped gardens, and comprises just five newly

converted apartments, each finished to an exceptional standard.

Accessed via its own private entrance, this elegant ground-floor home opens into a welcoming hallway leading to a lounge and dining area with an open-plan, fully fitted kitchen. Finished with Caesarstone worktops and integrated appliances, the space is perfectly designed for both modern living and entertaining.

The property further offers two generous double bedrooms, a stylish bathroom with rainfall shower over the bath, and excellent storage throughout.

Call today to arrange a viewing
02392 864 974
www.bernardsea.co.uk





Call today to arrange a viewing
02392 864 974
www.bernardsestates.co.uk



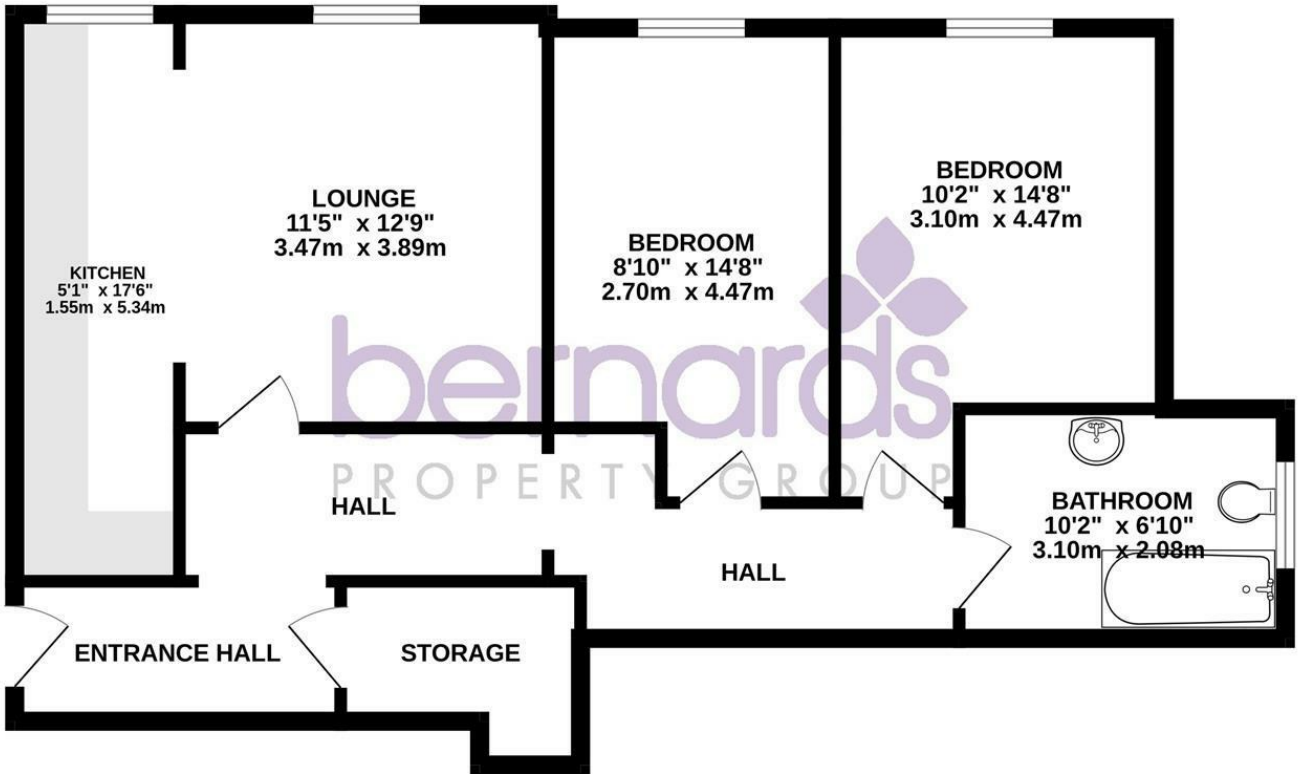
PROPERTY INFORMATION



Energy Efficiency Rating		Current	Potential
Very energy efficient - lower running costs			
(92 plus) A			
(81-91) B			
(69-80) C		78	78
(55-68) D			
(39-54) E			
(21-38) F			
(1-20) G			
Not energy efficient - higher running costs			
England & Wales		EU Directive 2002/91/EC	

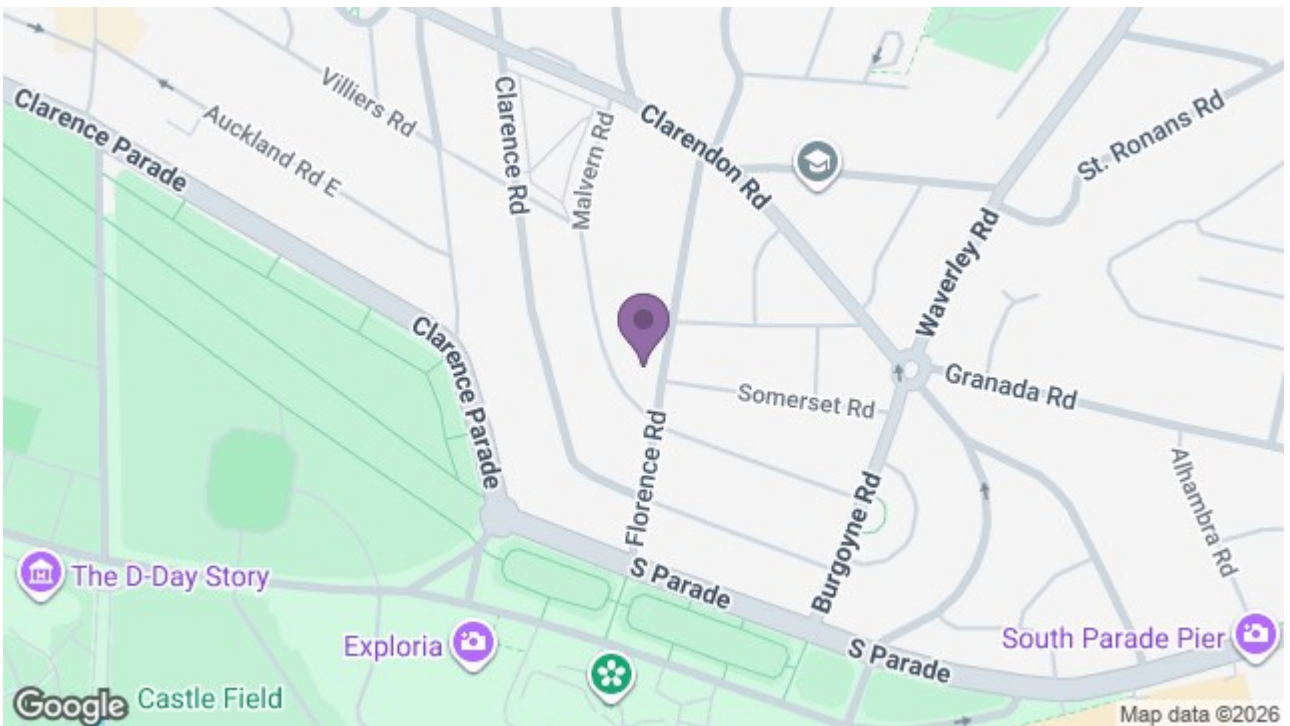


GROUND FLOOR
752 sq.ft. (69.8 sq.m.) approx.



TOTAL FLOOR AREA : 752 sq.ft. (69.8 sq.m.) approx.

Whilst every attempt has been made to ensure the accuracy of the floorplan contained here, measurements of doors, windows, rooms and any other items are approximate and no responsibility is taken for any error, omission or mis-statement. This plan is for illustrative purposes only and should be used as such by any prospective purchaser. The services, systems and appliances shown have not been tested and no guarantee as to their operability or efficiency can be given.
Made with Metropix ©2025



8 Clarendon Road, Southsea, Hampshire, PO5 2EE
t: 02392 864 974

